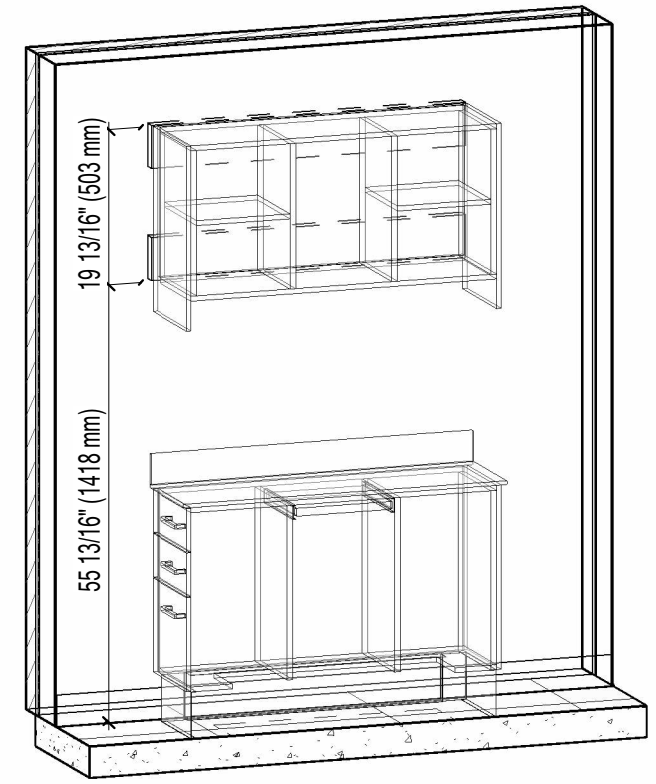
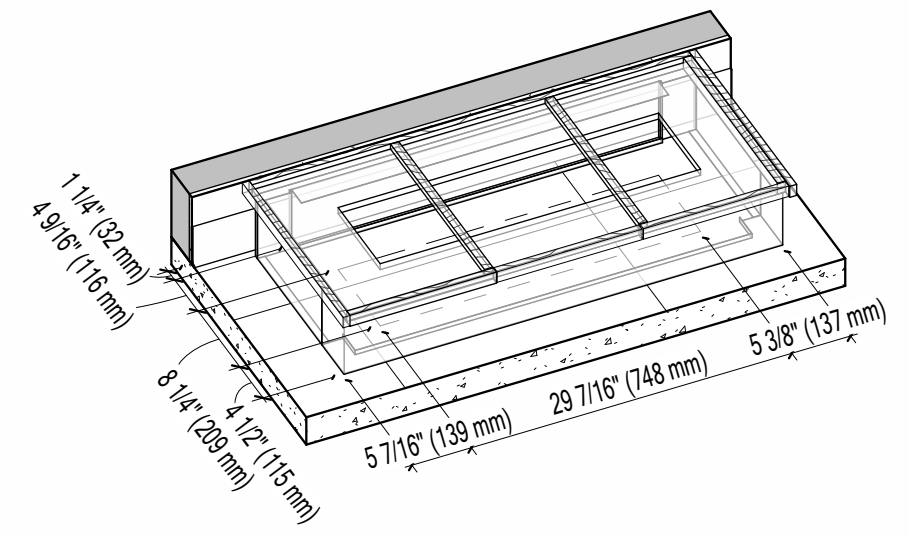


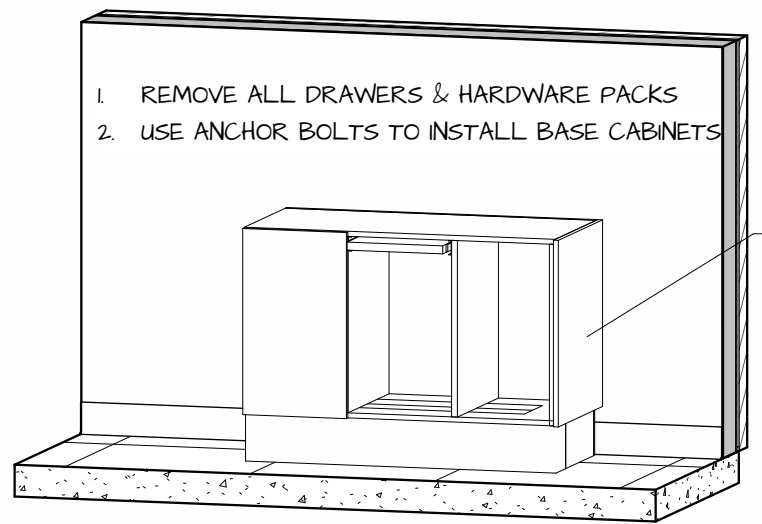
| Backers       |               |
|---------------|---------------|
| Description   | Length        |
| 2x6 Backer    | 3' - 5 21/32" |
| 2x6 Backer    | 3' - 5 21/32" |
| 6' - 11 5/16" |               |



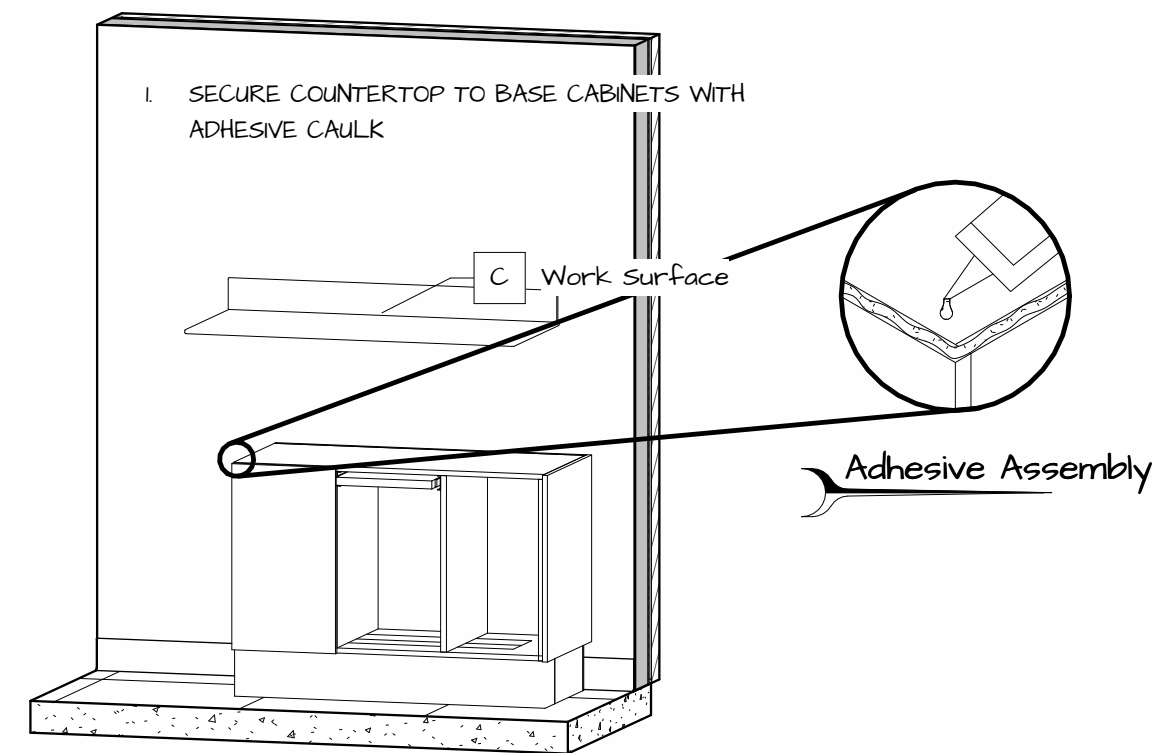
1 Utilities Location



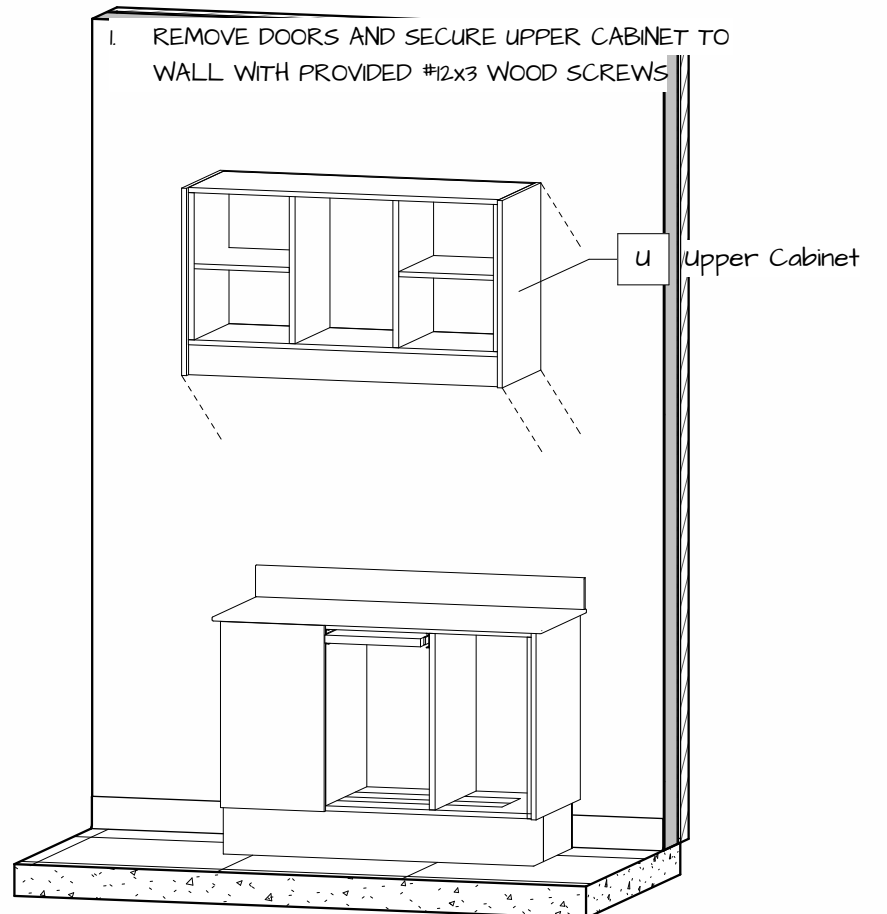
2 Utilities Access



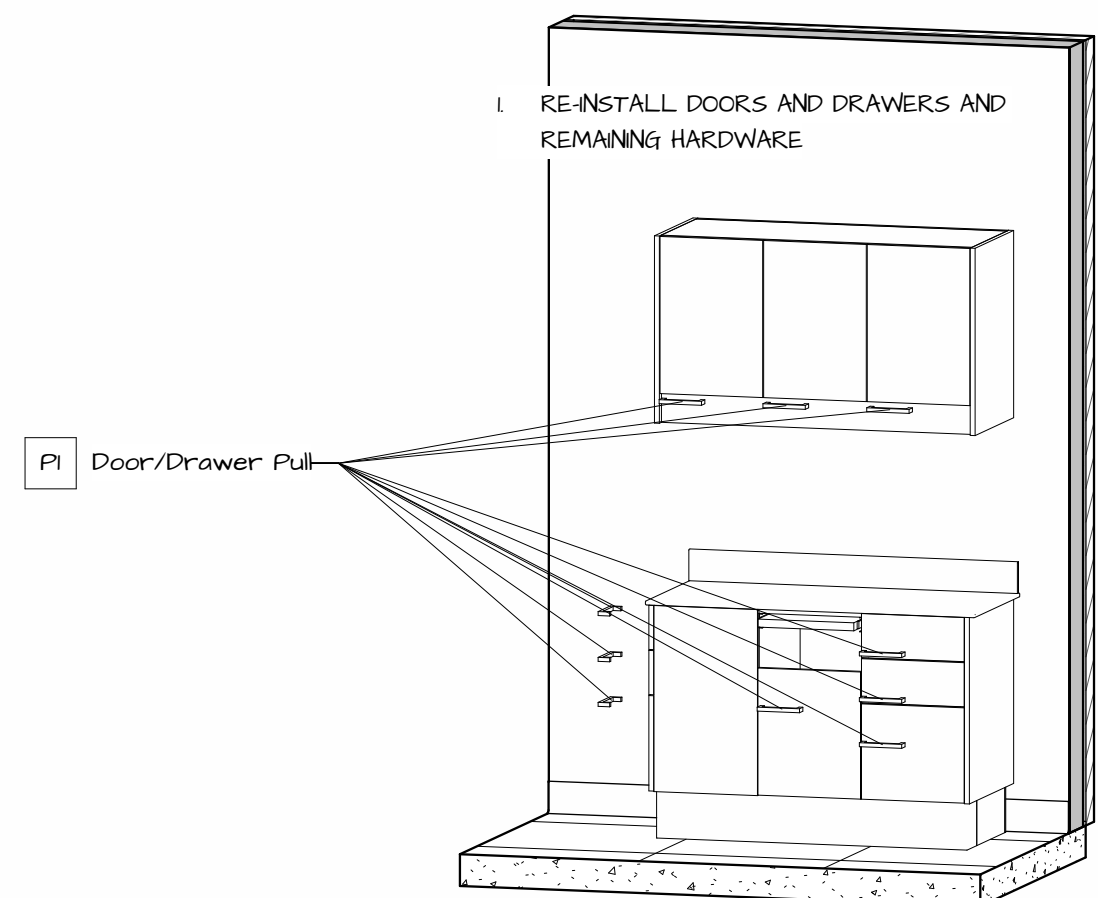
2.1 Install Base Cabinets



2.2 Install CounterTop

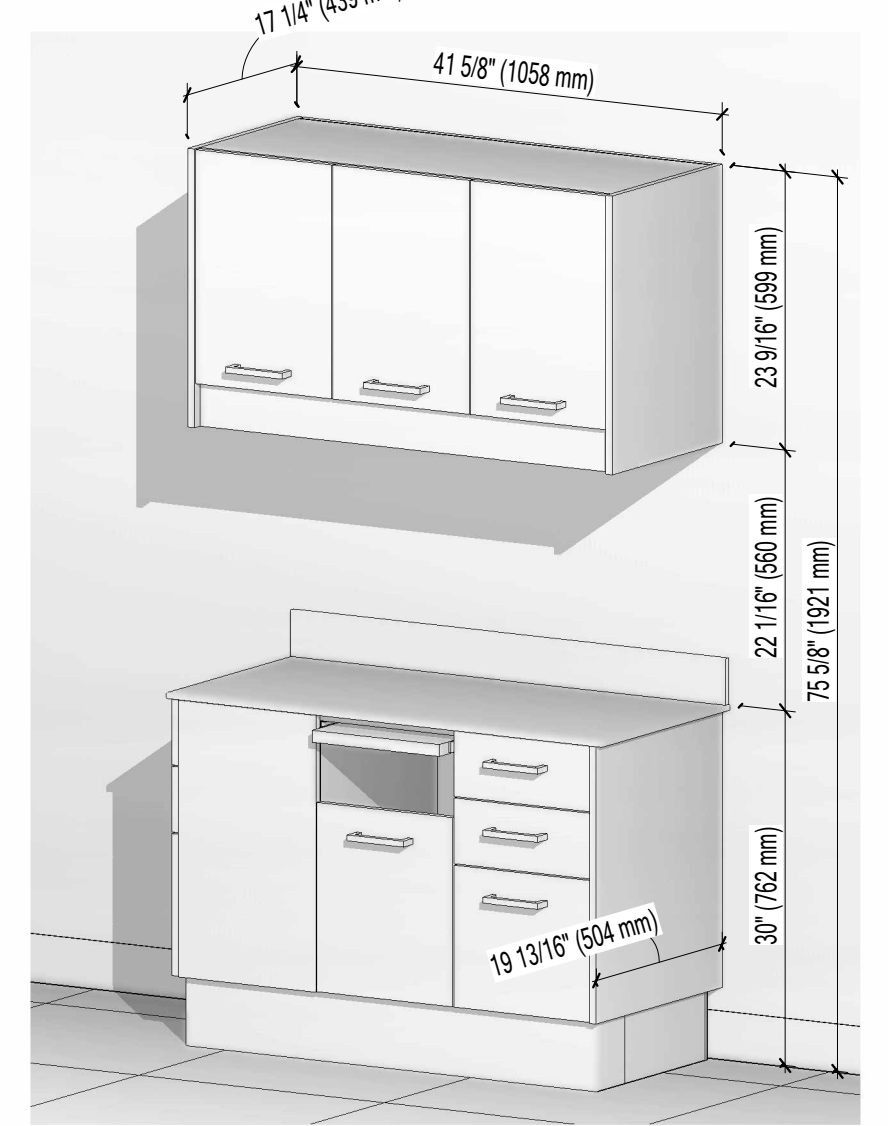


2.3 Install Upper Cabinets



2.4 Install Hardware

| Packing List |                    |     |
|--------------|--------------------|-----|
| Mark         | Description        | Qty |
|              | #12 3" Wood Screws | 4   |
|              | Anchor Bolts       | 4   |
|              | Strainer           | 1   |
|              | Tube of Caulk      | 1   |
| B            | Rear Console Base  | 1   |
| C            | Work Surface       | 1   |
| Pl           | Door/Drawer Pull   | 10  |
| u            | Upper Cabinet      | 1   |



3 Final Installation View



| Installation Drawing |                       | Prepared For: NOVA Solutions Inc. |
|----------------------|-----------------------|-----------------------------------|
| <b>LINEA</b>         |                       |                                   |
| Project              | REAR TREATMENT CENTER | <b>I-1</b>                        |
| Item #               | ALRTC B18-H00-U12     |                                   |
| Drawn by:            | Justin Martin         | 09/21/24                          |
|                      |                       | Rev. 1                            |