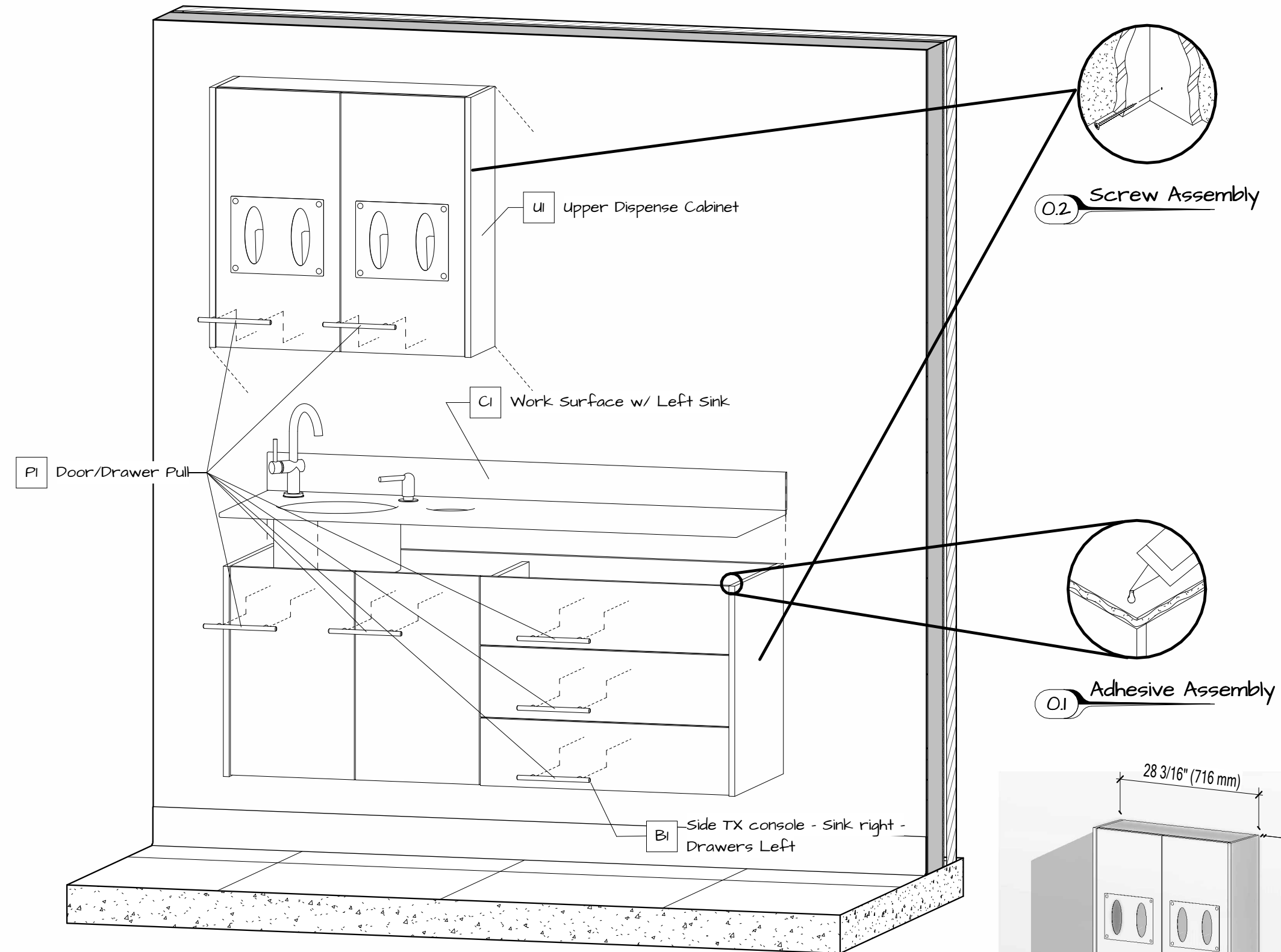
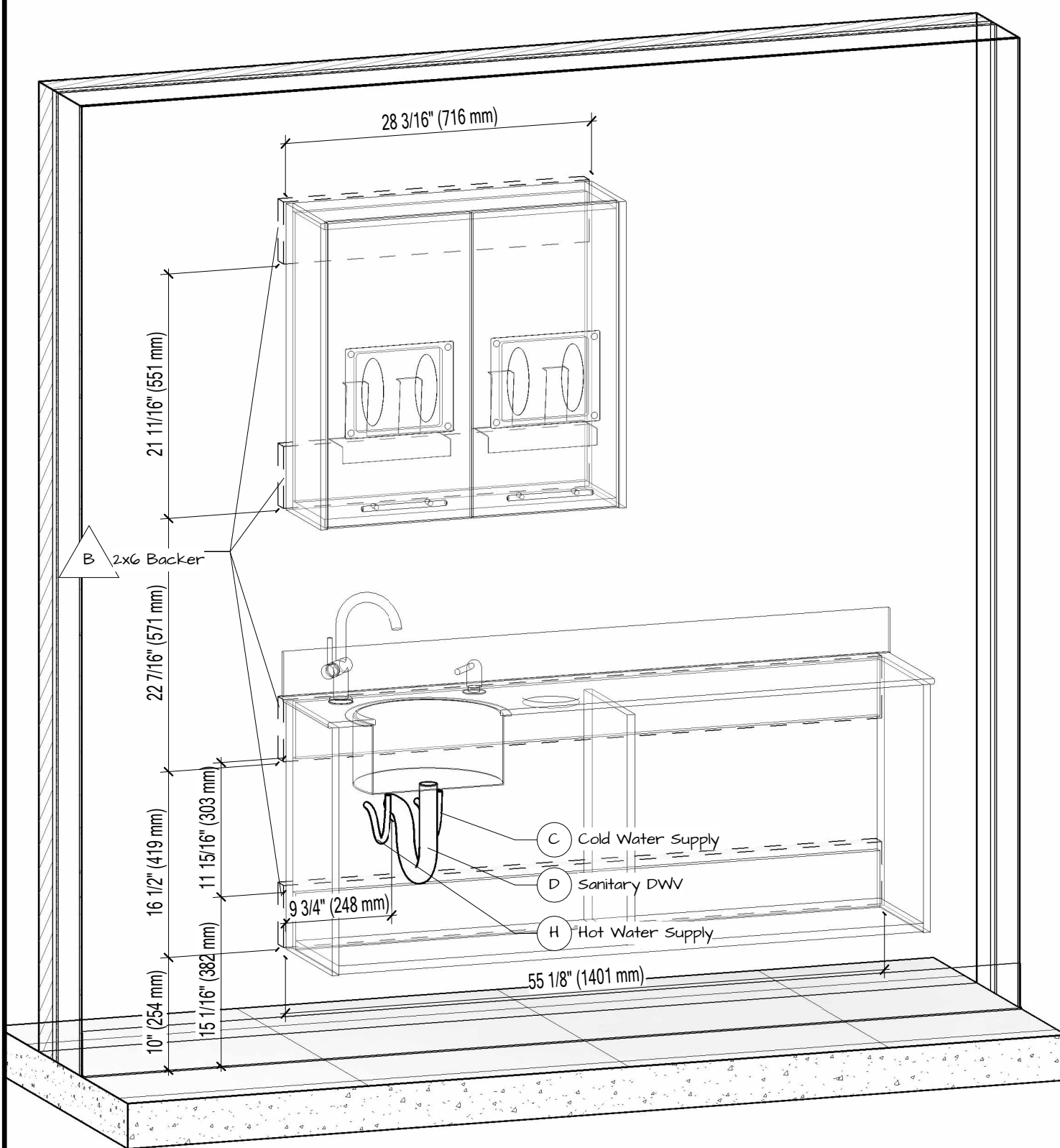


| Packing List | | | |
|--------------|-------|---|-----|
| Mark | Model | Description | Qty |
| | | Screws | 10 |
| BI | B31 | Side TX console - Sink right - Drawers Left | 1 |
| CI | B31S | Work Surface w/ Left Sink | 1 |
| PI | | Door/Drawer Pull | 7 |
| UI | U31 | Upper Dispense Cabinet | 1 |

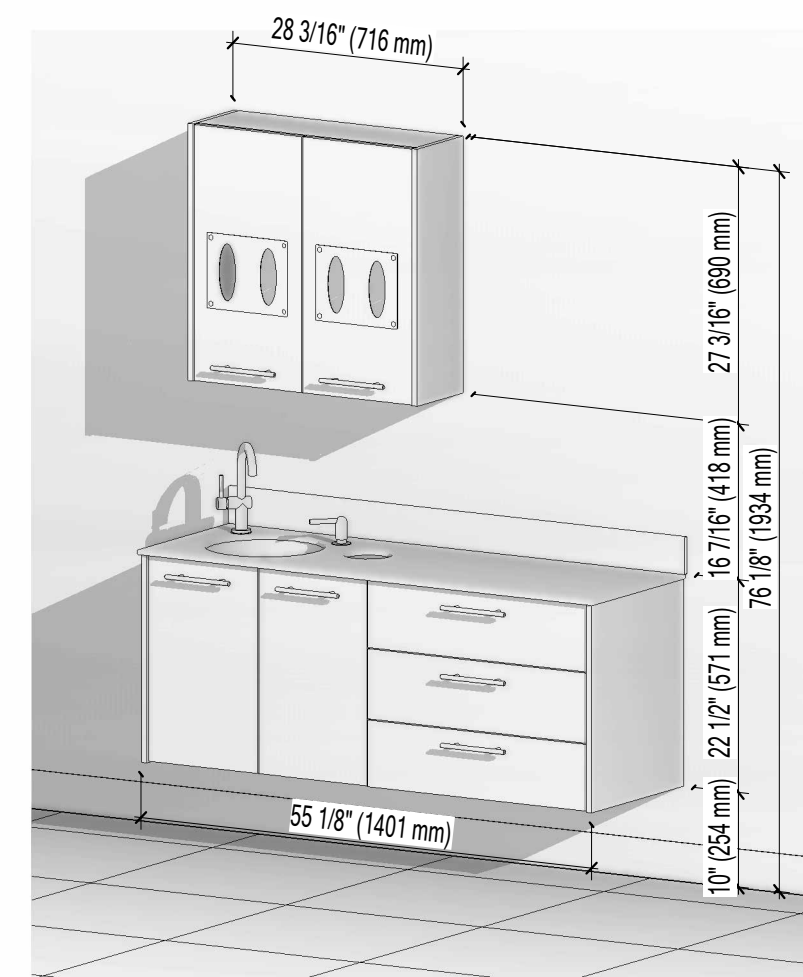
| Backers | |
|-------------|--------------|
| Description | Length |
| 2x6 Backer | 2' - 4 3/16" |
| 2x6 Backer | 2' - 4 3/16" |
| 2x6 Backer | 4' - 7 5/32" |
| 2x6 Backer | 4' - 7 5/32" |

| Utilities | | |
|-----------|-------------------|-----|
| Mark | Description | Qty |
| H | Hot Water Supply | 1 |
| C | Cold Water Supply | 1 |
| D | Sanitary DWV | 1 |

13' - 10 21/32"



2 Front Install



3 Final Installation View

1 Utilities Location



NOVA Solutions Inc.
217-342-7070
sales@novasolutionsinc.com

| Installation Drawing | |
|----------------------|-------------------|
| Title | ALSTC B31-H00-U31 |
| Date | 05/09/2024 |
| Drawn by | Justin Martin |