

Item #: ALSTR 06D-000-000

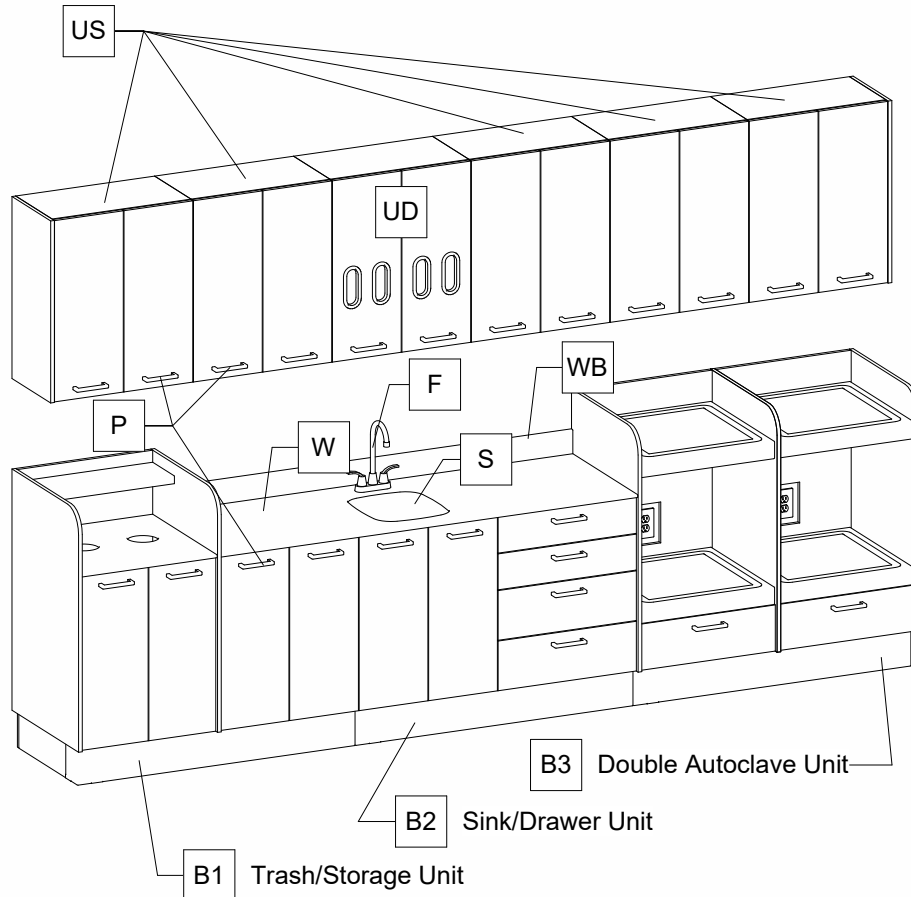
Install - Cover Page



Cover Page	I
Unpacking	I-0
Utilities Location	I-1
Base Cabinets	I-2
Achorbolt Layout Full Scale	I-3t
Upper Cabinets	I-4
Countertop & Hardware	I-5
Final Assembly	I-6
Sales Drawing Render	S-0
Sales Drawing	S-1

Item #: ALSTR 06D-000-000

Install - Unpacking



Packing List

Mark	Description	Qty
------	-------------	-----

Cabinetry

B1	Trash/Storage Unit	1
B2	Sink/Drawer Unit	1
B3	Double Autoclave Unit	1
UD	Upper Dispense Cabinet	1
US	Upper Cabinet	5
W	Work Surface	1
WB	Backsplash	1

Hardware

	#12 3" Wood Screws	48
	#14 1-1/4" Cabinet Screws	4
	Sex/Sleeve Bolt	24
	Wedge Anchor Bolts	6
P	Door/Drawer Pull	24

Other

	Strainer	1
	Tube of Caulk	1
F	Faucet	1
S	Undermount Sink	1

Skid A contains: Trash & Storage Cabinets pre-attached to each other and a Toe Kick.

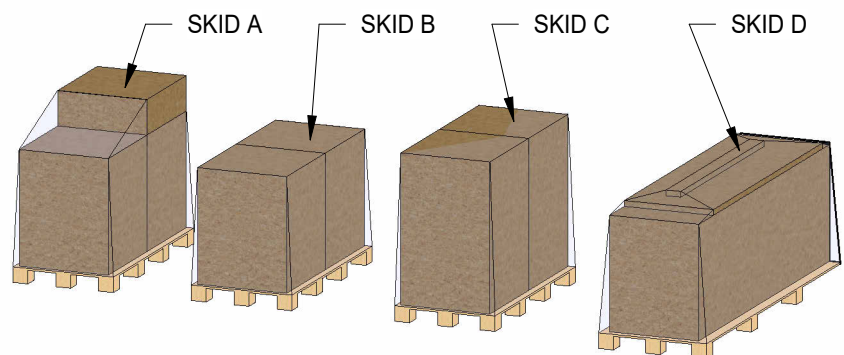
Skid B contains: Sink & Drawer Cabinets pre-attached to each other and a Toe Kick.

Skid C contains: Double Autoclave Cabinets pre-attached to each other and a Toe Kick.

Skid D contains: All Wall cabinets, work surface and back splash.

1. Remove all packing material.

2. REMOVE HARDWARE PACK FROM SINK BASE ON **SKID B**.

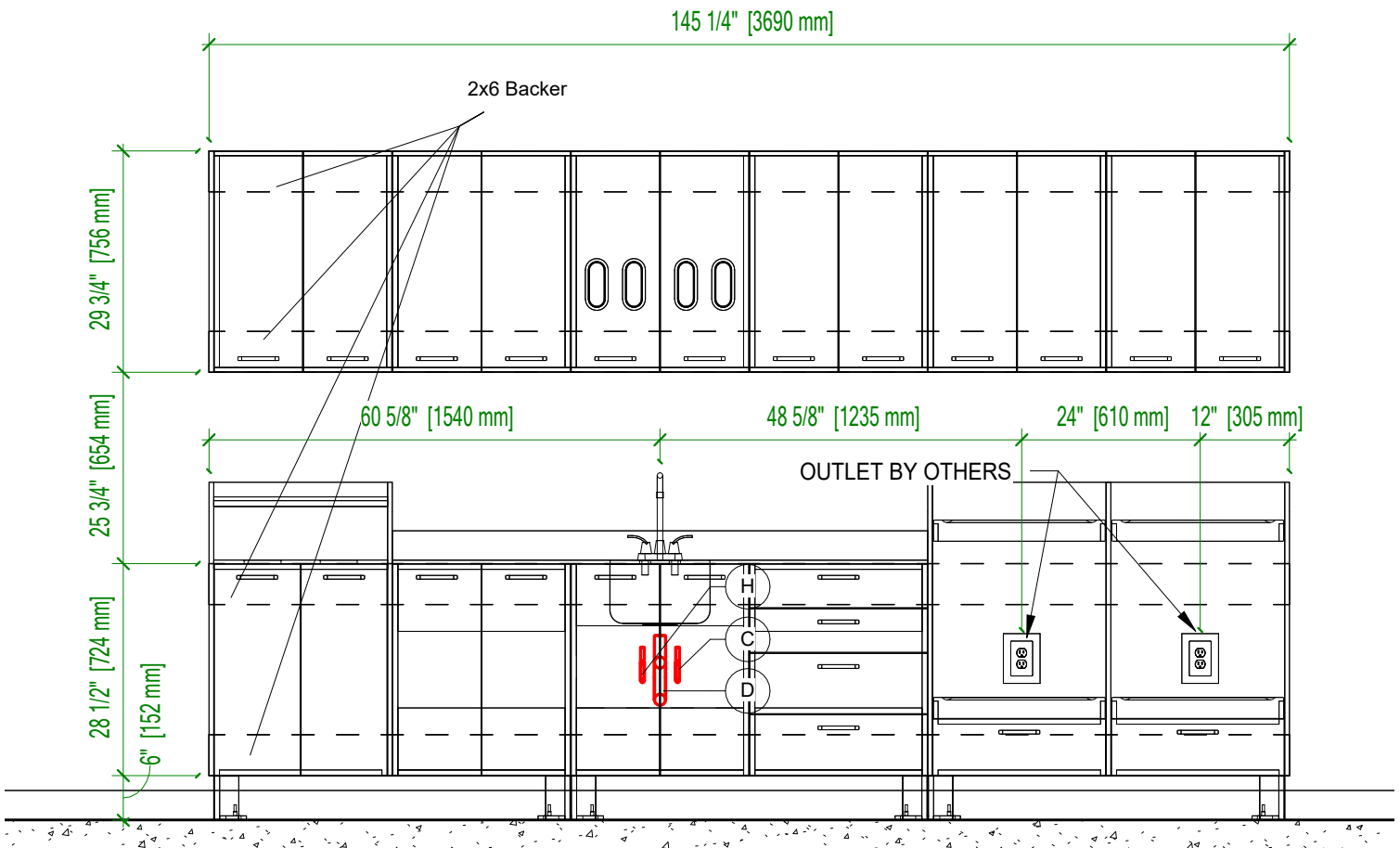


Item #: ALSTR 06D-000-000

Install - Utilities Location

Backers	
Description	Length
2x6 Backer	12' - 1 9/32"
2x6 Backer	12' - 1 9/32"
2x6 Backer	12' - 1 9/32"
2x6 Backer	12' - 1 9/32"
48' - 5 3/32"	

Plumbing Utilities -by others-		
Mark	Description	Qty
H	Hot Water Supply	1
C	Cold Water Supply	1
D	Sanitary DWV	1



Item #: ALSTR 06D-000-000

Install - Base Cabinets

INSTALL TOE KICK ASSEMBLIES

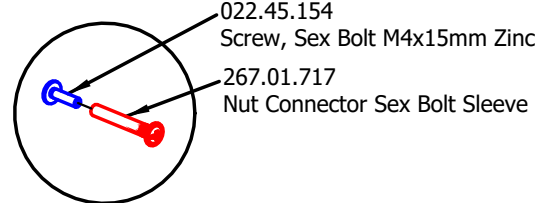
1. Using Template **Drawing I-3t**, Drill anchor bolt holes (3/8" dia x 2" min) into floor as the designated locations (shown in BLUE).

Note: Toe kick leveling glides can be adjusted (top-down access) with flat head or 7/32 socket. ALL LEVELING GLIDES ARE PRE-INSTALLED ON TOE KICKS

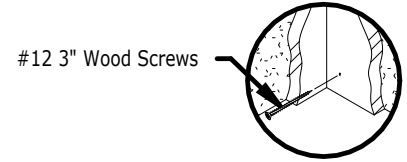
2. Place anchors through toe kick into drilled holes for all toe kick sections. **[Detail A]**

Note: Do not secure anchors to allow movement until final assembly/leveling is completed

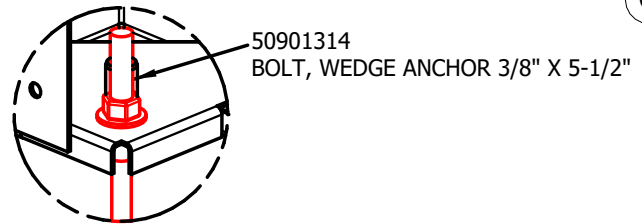
3. Attach to B2 to B1 with sex/sleeve bolt set (4) **[DETAIL SSB]**
4. Attach to B2 to B3 with #14 x 1-1/4" screw set (4) **[DETAIL CTC]**
5. Attach to solid wall blocking/studs with #12-3" wood screws. **[DETAIL CWS]**



SSB

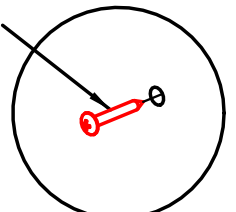


CWS

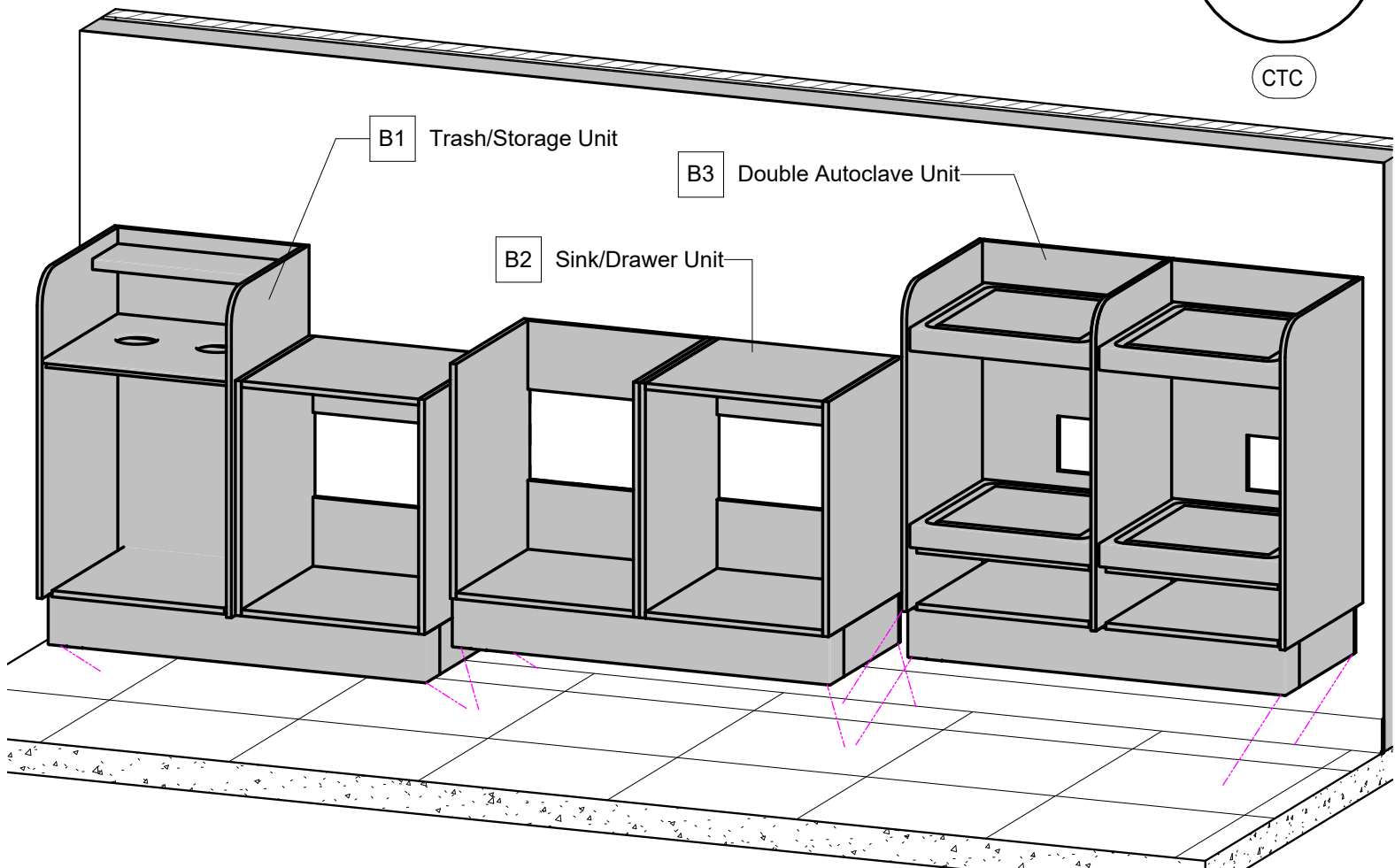


A

1131460
Screw, #14 x 1 1/4" SMS



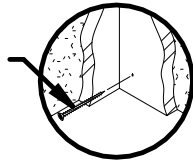
CTC



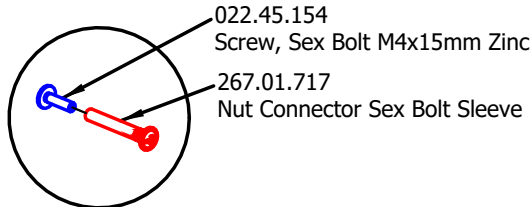
Item #: ALSTR 06D-000-000

Install - Upper Cabinets

#12 3" Wood Screws



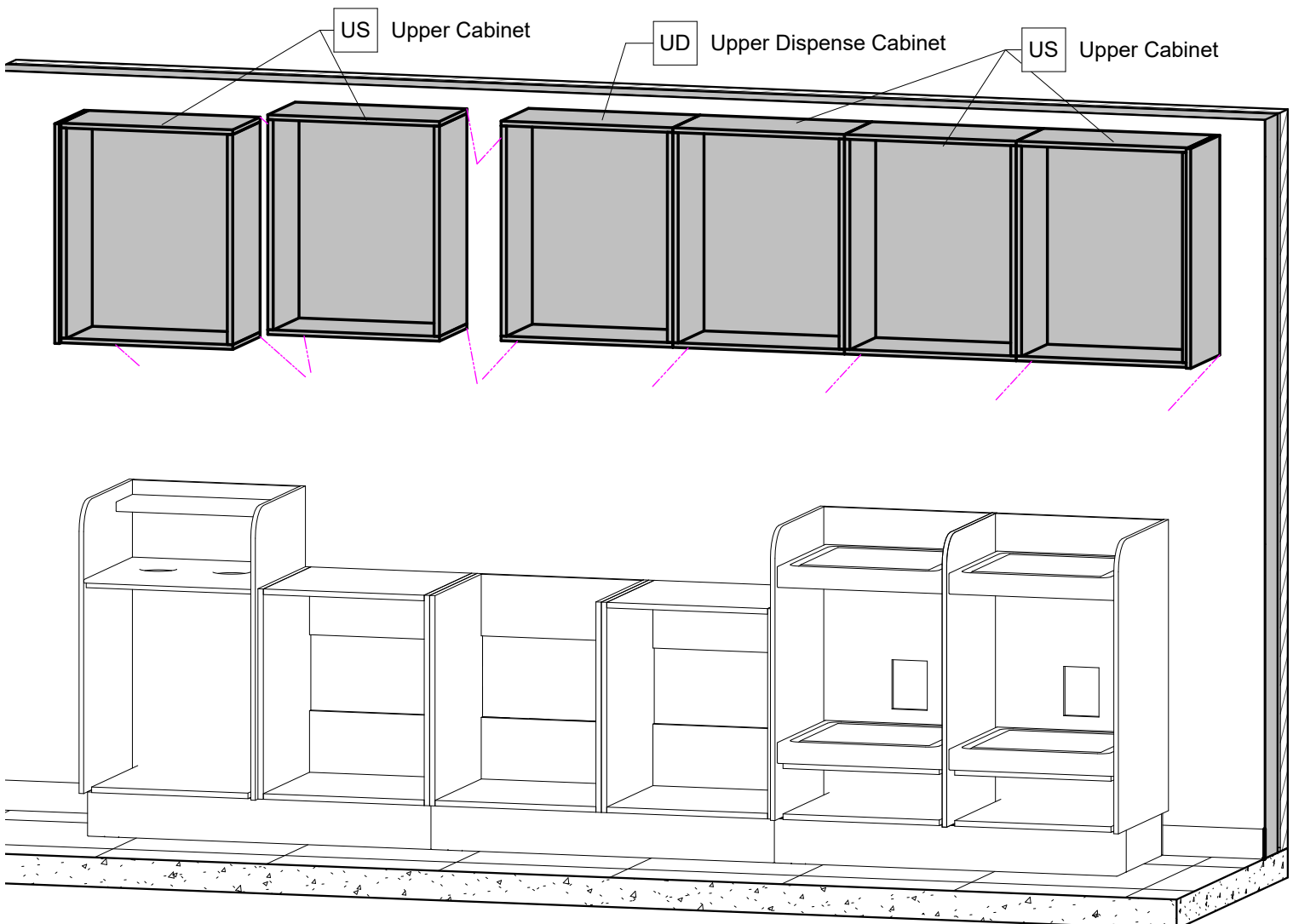
CWS



SSB

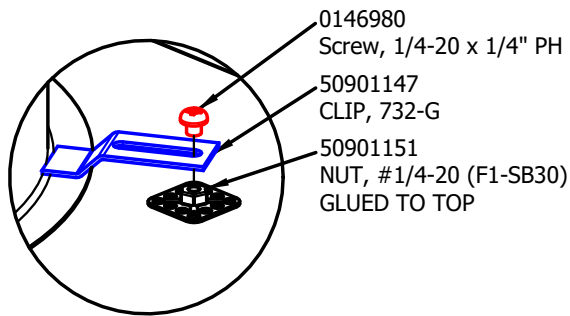
INSTALL BASE CABINET

1. Remove all doors & drawers.
Doors/drawers are matching/coordinated sets. Keep track of where each was removed. Doors & drawers must be reinstalled in same configuration at end of assembly.
2. Place left most wall cabinet on wall as shown and attach to solid wall blocking/studs with #12-3" wood screws. **[DETAIL CWS]**
3. Repeat for remainder for remiander of wall cabinets as shown and connecting them to each other with sex/sleeve bolt set **[DETAIL SSB]**



Item #: ALSTR 06D-000-000

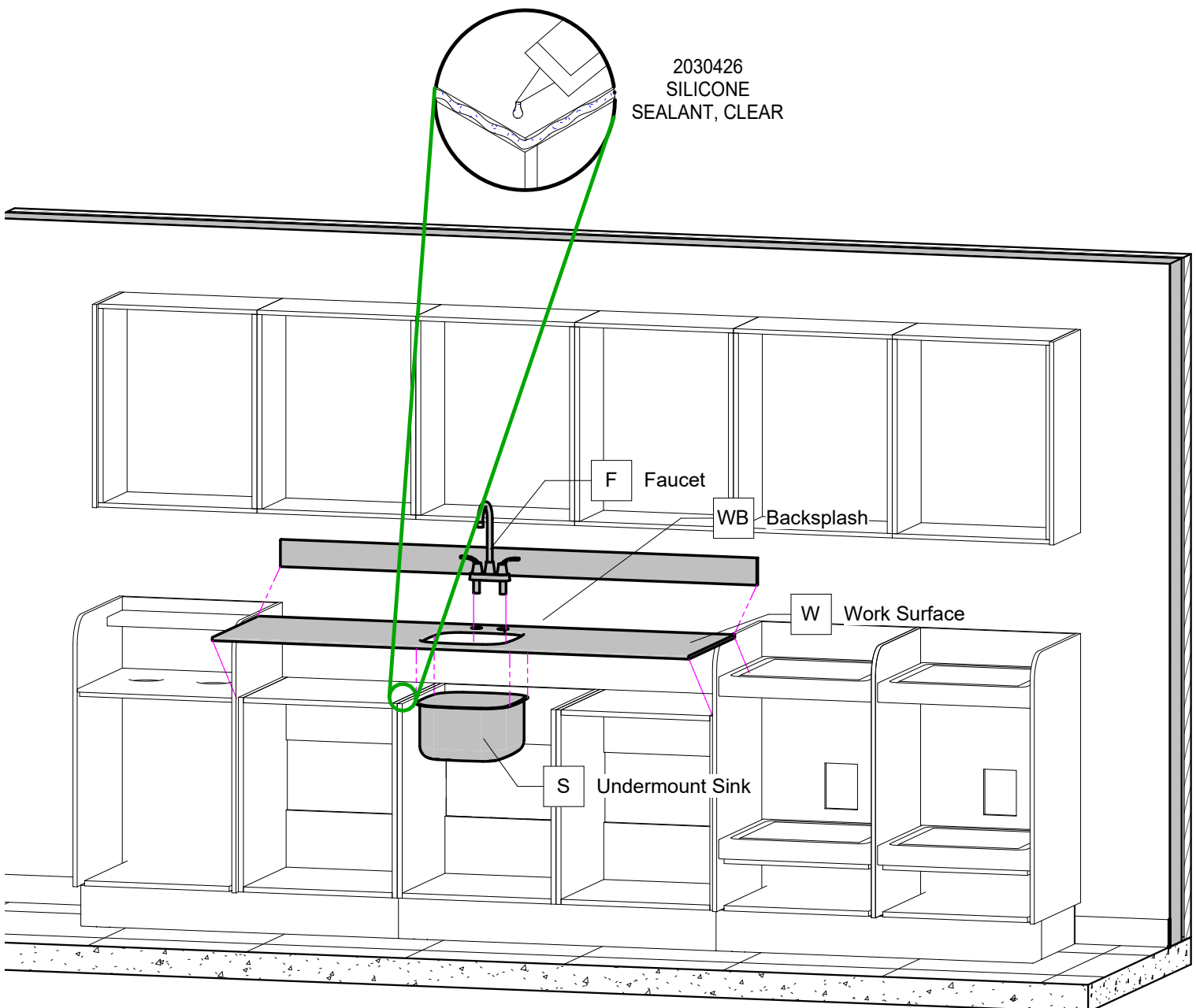
Install - Countertop & Hardware



INSTALL COUNTERTOP TO SINK BASE CABINET

1. Install Sink, Faucet, Strainer.
Apply provided silicone to the sink prior to installing
2. Place Countertops on respective base cabinets.
Apply provided silicone to secure work surface to base cabinet

****NOTE: FINAL PLUMBING CONNECTIONS BY OTHERS****



Item #: ALSTR 06D-000-000

Install - Final Assembly

****NOTE: FINAL ELECTRICAL & PLUMBING CONNECTIONS BY OTHERS****

1. REINSTALL DOORS/DRAWERS IN ORIGINAL POSITIONS FROM WHERE THEY WERE REMOVED.
2. Attach Door/Drawer Pulls and remaining components as needed.
3. ADJUST TOE-KICK LEVELERS AND TIGHTEN ANCHOR NUTS.
4. CHECK FOR ALIGNMENT OF DOORS & DRAWERS, FINAL ADJUSTMENTS MAY BE NECESSARY.

